

# Niches installation instructions

## ● Product information

**[Product name]** Stainless steel niche, stainless steel electric towel rack niche  
**[Material]** 304 stainless steel **[Finishing]** PVD Electroplating & painting(customize)  
**[Application]** bathroom, bedroom, kitchen, dining room

## ● Description

Stainless steel niches are made of 304 stainless steel materials, and their surface treatment includes polishing, PVD electric silver, baking paint, sealing glaze and other processes. Handle the items gently during installation and use, and do not contact with acid-base items or liquids during use, otherwise it will cause luster and damage to the surface of the niche;

Stainless steel electric towel rack niche, using imported graphene effective thermal conductivity advantages, fast drying towels and clothes;

Do not dry sponge latex, rubber or silk clothing;

## ● Product maintenance instructions

Please keep the surface of the product clean and bright, and follow the following steps to clean regularly:

1. Clean the surface with water and a soft cloth.

2. Decontamination residue can only be removed with the following cleaners:

Flexible liquid cleaner.

Colorless glass cleaner, non-abrasive fully soluble powder cleaner (mix as directed). Do not use abrasive wax.

Do not use rubbing cleaners, emery cloth or handkerchiefs.

Do not use products containing abrasive cleaners, ammonia, bleach, acid cleaners, waxes, alcohol, solvents.

3. Immediately after cleaning, remove the detergent with water and wipe dry with a soft cotton cloth.

## ● Prepare instructions for product customization before placing orders

**[Customer Notice]** Customized niche specifications: need to reserve holes on the wall first (opening holes according to technical parameters tolerance control +3mm or less)

Customized niche specifications: need to reserve holes on the wall first (opening holes according to technical parameters tolerance control +3mm or less)

: Depth, width and height of the opening dimensions provided (conventional niches gap width/height 5mm, depth 10mm) : niches with lights and electric heating (gap width/height 5mm, depth 15mm) 15 is the wiring space

: Provides features that require custom niches + surface treatment colors

: niches with lights, including transformers, which are preferentially reserved on the ceiling for easy maintenance: electric towel rack niches need to be embedded with wire tubes as required, and reserve the position of control switches

## ● Installation Procedure (no power)

1. According to the size of the drawing, mark the size, open the wall hole or build the wall hole.

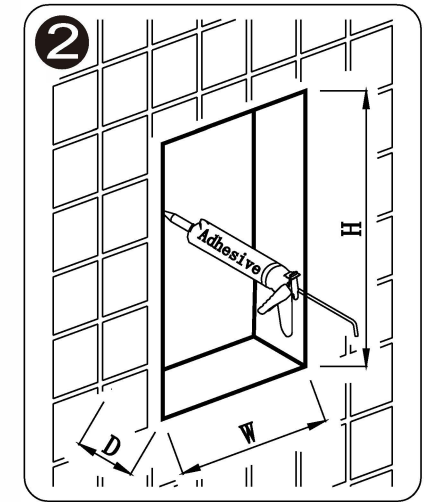
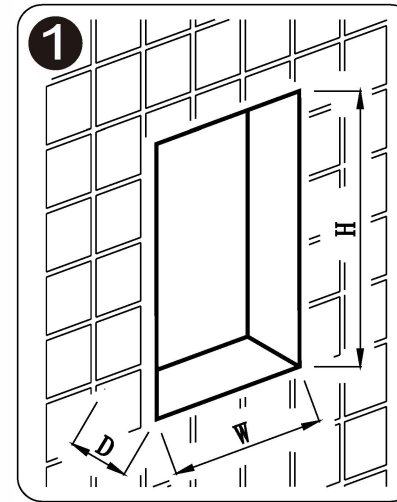
2. Smooth the bottom of the wall hole, ensure the smooth installation of the niche, if there is a forward tilt, the border is fitted with a gap, smooth the bottom as appropriate, making sure the border fits tightly to the wall.

3. Behind the frame to play glass glue, seam glue, not limited to the use of glue can stick to the niche can be used the adhesive needs to be mildew resistant, waterproof, such as in high temperature environments also need to be resistant to high temperatures.

4. Stainless steel niches are installed in the wall holes to ensure that there is no gap.

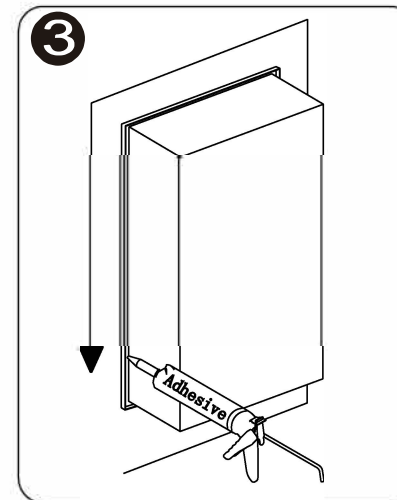
# Niches installation instructions

## ● Niches installation steps View (no power)

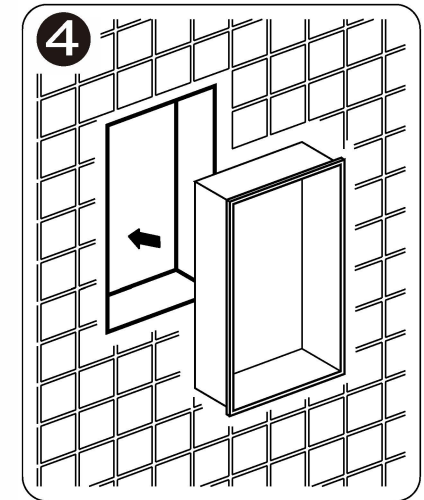


(Glue up and down, left and right walls)

(Hole tolerance control +3mm or less according to technical parameters)



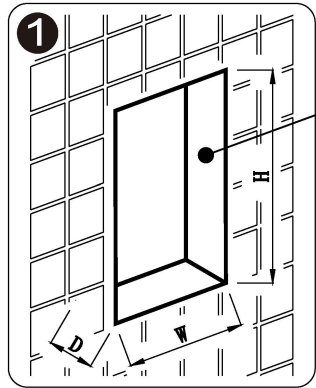
(The wall around the niche is covered with glue)



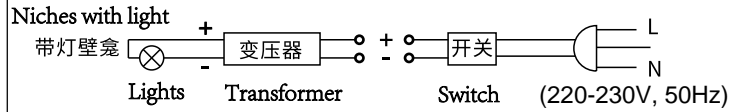
(Installing niches fixed with adhesive tape for 24 hours)

# Niches installation instructions

## ● Niches installation steps view (with lights)

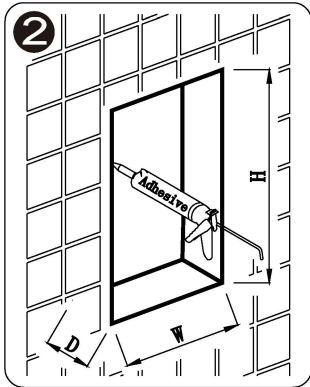


After opening the hole, reserve the entry power cable (220-230V, 50Hz) live line + neutral line (about 300mm extended) to connect one end of the product transformer. (need professional wiring) and test power to check the line

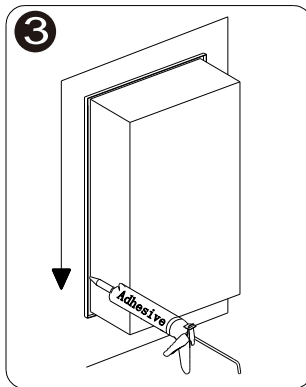


The transformer is attached to the back of the niche;  
: niches with lights and electric heating (gap width/  
height 5mm, depth 15mm)  $\geq 15$  for wiring space

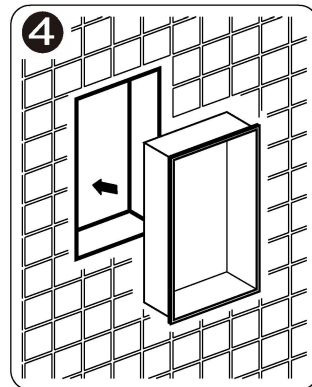
(Hole tolerance control +3mm or less  
according to technical parameters)



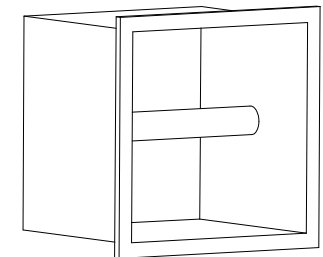
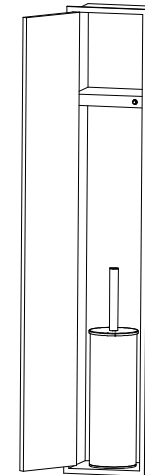
(Glue up and down, left and right walls)



(The wall around the niche  
is covered with glue)



(Install wall constitution, fixed  
with adhesive tape for 24 hours)



**Tips: Part of the power supply installation, non-professionals  
are easy to cause equipment damage and self-injury!**